

Truth's new PAL System was exclusively created for slider or hung windows designed with an interlock system. This completely "automatic" lock gives the homeowner a clear visual indicator, from several feet away, that the window is closed and locked. Window profiles that incorporate a notch in the meeting rail may not require a keeper to secure the window in the locked position resulting in decreased inventory costs to the manufacturer and infinite side-to-side forgiveness in the locks' application.

### FEATURES & BENEFITS:

- Truth's new PAL System was designed for vinyl or wood windows with an interlock.
- Locked position easily visible from across the room.
- Compared to competitive models which require constant manipulation of the lock as the window is moved past its point of engagement, Truth's PAL System with its "automatic" latching feature allows users to disengage the lock prior to moving the window. The benefit of this unique feature is that Truth's PAL System allows users to use both hands to move the sash which makes it easier for the homeowner to open the window.
- When not engaged, the latching bolt stays retracted throughout the travel of the window which helps prevent accidental marring of the window as it slides past decorative grilles.
- A keeper is not required for notched window systems.
- On profiles that have a "locating groove", a dimpled version of the PAL System is available to help locate and keep the lock in position during application process.
- For window designs that require keepers - contact Truth Hardware for available options. (see Truth Tip #4)

### LOGO OPTIONS:

For that "personalized touch," Truth Hardware's Positive Action Locks are capable of accepting your company's name or logo with Truth's pad printing process. This logo reproduction process is an attractive way of highlighting your company signature.

### WARRANTY:

Protected under the terms of the Truth Warranty for Window & Door Manufacturers and Authorized Distributors. Refer to Truth's Terms & Conditions for further details.

### MATERIAL:

High pressure, corrosion resistant, die-cast zinc with a high strength acetal bolt.

### FINISH:

Electrostatically applied, durable coatings that provide excellent resistance to chipping, scratching and corrosion while maintaining color stability for years in direct sunlight. Please refer to Truth's color chart for examples of Truth's most popular finish options. Truth also offers a wide range of decorative "plated" finishes - contact Truth for additional information on availability of these finishes on specific product lines.

### ORDERING INFORMATION:

1. Order PAL System style (specify by part number)
  - #19.60.XX.100 for standard bolt or
  - #19.60.XX.200 for standard bolt with dimpled housing or
  - #19.61.XX.100 for low profile bolt version or
  - #19.60.XX.200 for low profile bolt with dimpled housing.
2. Specify finish number.
3. Select screws (fasteners). Sold separately.

### RECOMMENDED SCREWS:

2 - #7 Phillips Flat Head Screws. Refer to drawings for additional specs. Length and thread type to be determined by profile. For further information on screw selection - see Truth Tips.

### TRUTH TIPS:

1. For accurate hardware placement in vinyl or metal applications, pre-drilling of the window profile is strongly recommended.



2. To help locate mounting position, Truth recommends a "locating groove" in the profile. The dimpled version of the PAL System used on profiles with a groove will also help keep lock in position during application process.
3. For vinyl window applications, mounting screws should pass through two PVC walls, or one PVC wall and one insert wall. For this reason, it may be necessary to use a longer screw than is recommended.
4. For metal window profiles, Truth recommends stainless steel machine screws. However, in most applications, stainless steel sheet metal screws will provide adequate holding power.
5. For top mounted keeper configurations a 0.3" minimum deep surface is needed on the fixed rail with both surfaces flush when closed.

### INCLUDE TRUTH SPECS ON YOUR NEXT WINDOW PROJECT

Window check rail locks shall be included which will increase both security and weather seal tightness. The lock must provide easy operation and positively locks upon closure.

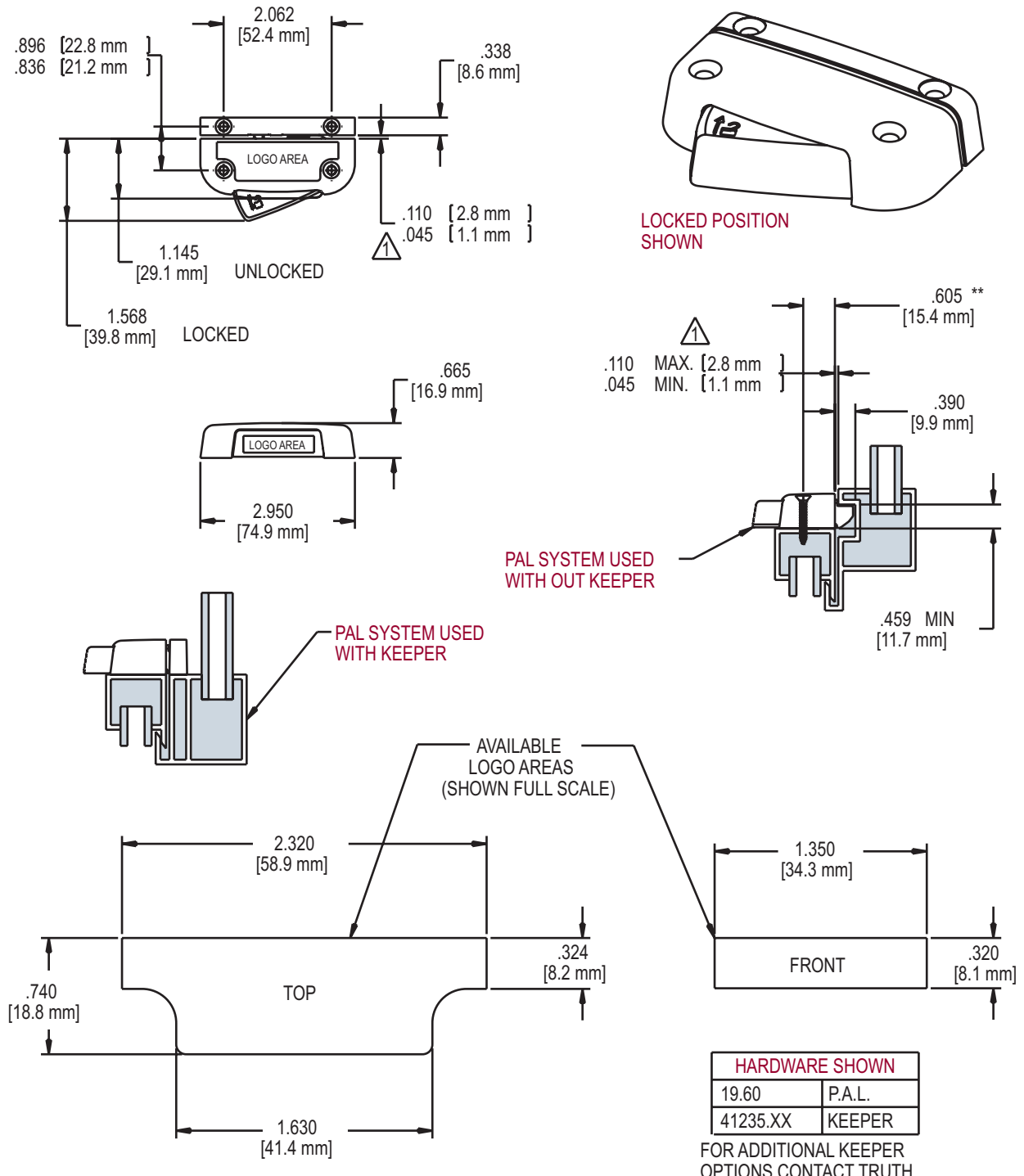
Window lock will be of quick snap action swing bolt design providing maximum forgiveness for sash alignment. The product will be constructed of high pressure zinc alloy die cast with high strength acetal bolt.

Window lock shall have automatic latching to allow user to use both hands to move the sash. Window will be unlocked by pressing a push lever.

Window locks will be 19 series Positive Action Locks as manufactured by Truth Hardware, Owatonna, Minnesota.

# 19 POSITIVE ACTION LOCK (PAL SYSTEM)

FIG. 1 APPLICATION OF 19.60 POSITIVE ACTION LOCK (PAL) SYSTEM



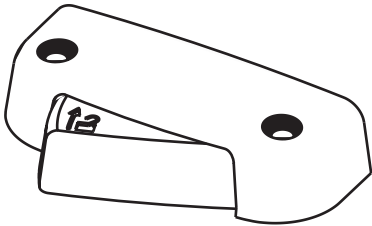
**RECOMMENDED SCREWS:**

WOOD: (P/N 19160.XX) #7 X 1 1/2 PHILLIPS FLAT HEAD SHEET METAL SCREWS.

PVC/METAL: #7 PHILLIPS FLAT HEAD SCREWS, (LENGTH AND THREAD TYPE TO BE DETERMINED BY PROFILE)

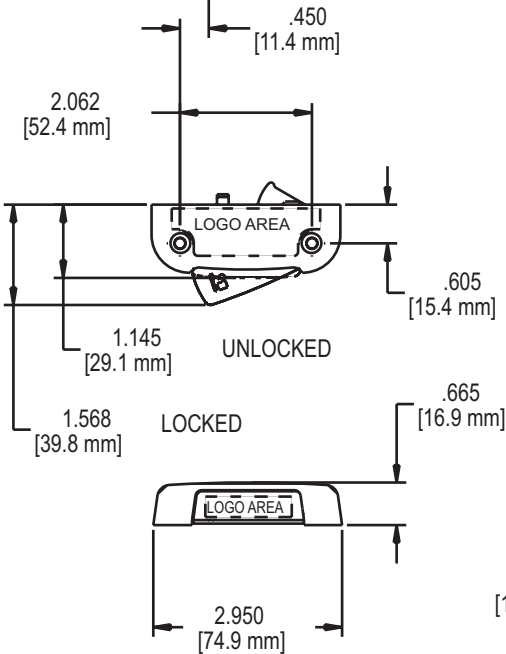
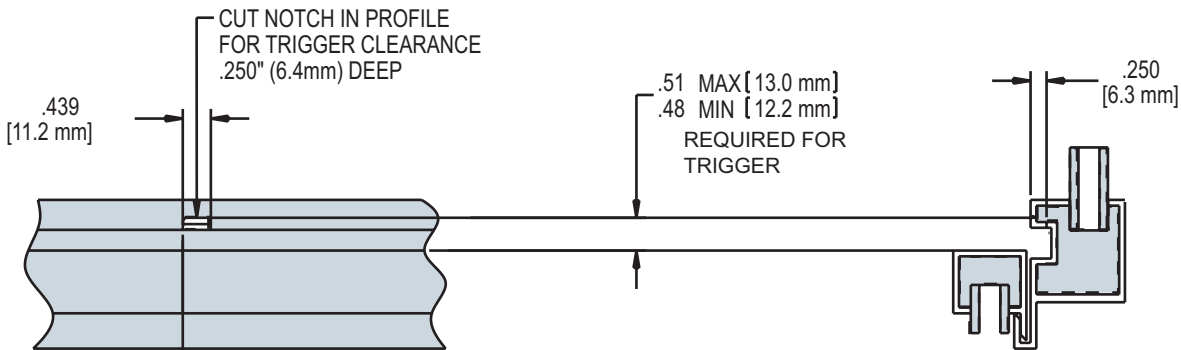
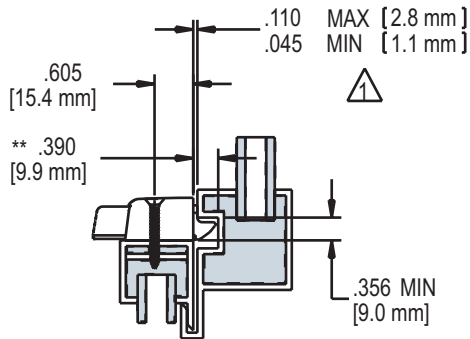
**⚠** DIMENSIONS MUST BE MAINTAINED FOR PROPER LOCK OPERATION  
**\*\*** FOR ACCURATE HARDWARE PLACEMENT PRE-DRILLING IS STRONGLY RECOMMENDED

FIG. 2 APPLICATION OF 19.61 POSITIVE ACTION LOCK (PAL) SYSTEM

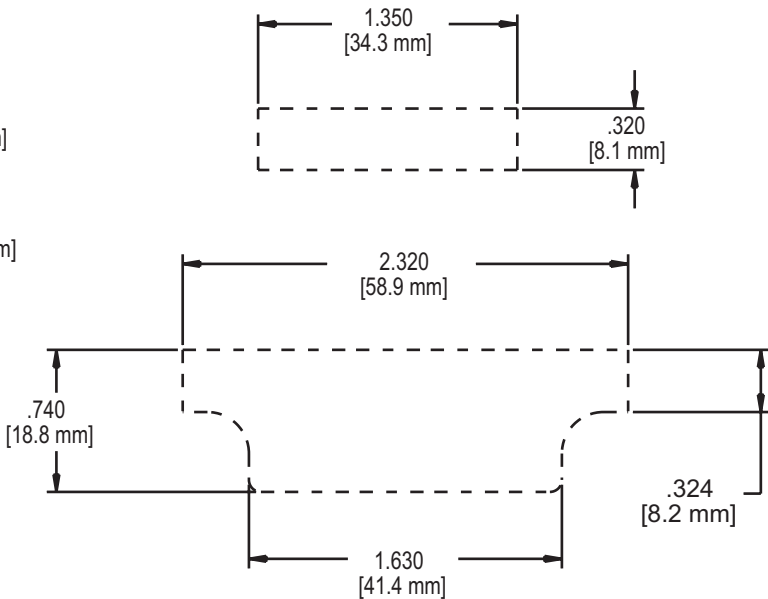


LOCKED POSITION SHOWN

HARDWARE SHOWN	
19.61	P.A.L.



AVAILABLE LOGO AREAS (SHOWN FULL SCALE)



**RECOMMENDED SCREWS:**

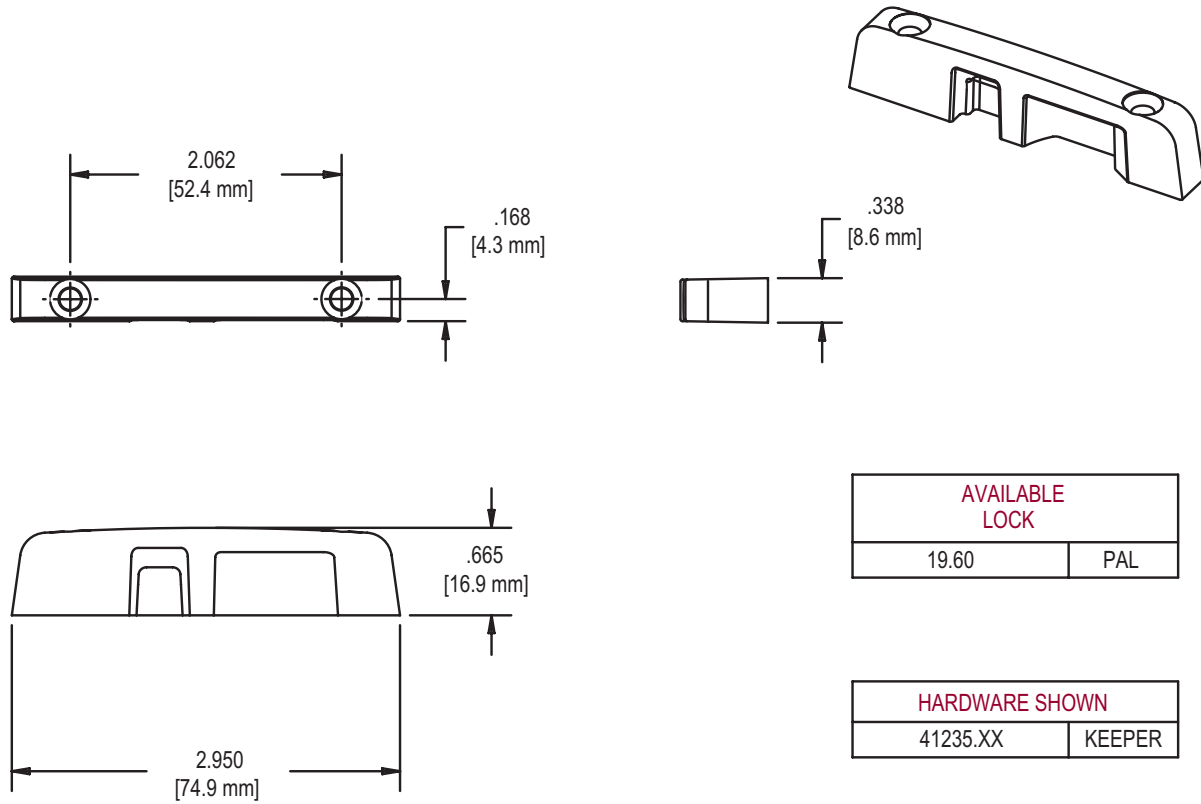
WOOD: (P/N 19160.XX) #7 x 1 1/2 PHILLIPS FLAT HEAD SHEET METAL SCREWS.

PVC/METAL: #7 PHILLIPS FLAT HEAD SCREWS, LENGTH AND THREAD TYPE TO BE DETERMINED BY PROFILE.

DIMENSION MUST BE MAINTAINED FOR PROPER LOCK OPERATION.  
 \*\*FOR ACCURATE HARDWARE PLACEMENT PRE-DRILLING IS STRONGLY RECOMMENDED

# 19 POSITIVE ACTION LOCK (PAL SYSTEM)

FIG. 3 41235.XX KEEPER



AVAILABLE LOCK	
19.60	PAL

HARDWARE SHOWN	
41235.XX	KEEPER

**RECOMMENDED SCREWS:**

WOOD: (QTY 2) (P/N 19160.XX) #7 X 1 1/2 PHILLIPS FLAT HEAD SHEET METAL SCREWS

PVC/METAL: #7 PHILLIPS FLAT HEAD SCREWS, (LENGTH AND THREAD TYPE TO BE DETERMINED BY PROFILE)