



New from Truth Hardware, the Recess Mounted Check Rail lock.

- This flush mount check rail lock was specifically designed for wood and vinyl windows.
- By recessing the base of the lock into the window, a cleaner visual presence is created along the check rail.
- A unique 1/8" flange around the housing on the 9368 Series helps to cover-up any routing defects that may occur during manufacturing.
- When mounting location space is a concern, optional "face-mounted" keepers are available (see drawings).
- Forgiving cam (306 series locks) helps to insure proper engagement between the lock and keeper even on assemblies where these two components may be misaligned. The benefits of the forgiving cam can help to reduce field service calls down the road.

NEW HANDLE DESIGN:

The contemporary new style of the handle is both stylish and functional. The sleek curve in the handles' design makes it more accessible in tight profile situations. The improved detent in the handle motion will assure the user that the cam is either fully open or closed.

TWO MOUNTING OPTIONS:

Truth's Recess Mounted Locks come in two unique mounting options. The 306 Series Locks, have their fasteners (screws) hidden below the users sight-line as the screws are applied through to the "face" of the window's profile. The 9368 Series Locks are mounted from the top, as the screws are inserted down through the locks top surface and into the profile, thereby leaving the screw heads exposed.

WARRANTY:

Protected under the terms of the Truth Warranty for Window & Door Manufacturers & Authorized Distributors. Refer to Truth's Terms & Conditions for further details.

LOGO OPTIONS:

For that "personalized touch," these locks are capable of accepting your company's name or logo. Truth's logo process is an attractive way of highlighting your company signature.

MATERIAL:

High-pressure, corrosion resistant, die-cast zinc.

FINISH:

Electrostatically applied, durable coatings that provide excellent resistance to chipping, scratching and corrosion while maintaining color stability for years in direct sunlight. Please refer to Truth's Color Chart for examples of Truth's most popular finish options. Truth also offers a wide range of decorative "plated" finishes - contact Truth for additional information on availability of these finishes on specific product lines.

ORDERING INFORMATION:

1. Order lock style (surface or face mount) by item number. Refer to the following drawings for the appropriate items numbers
2. Order Keeper number. Refer to drawings for appropriate item number. (sold separately).
3. Specify finish code (denoted where "xx" appears in following tables).
4. Select mounting screws (sold separately).

RECOMMENDED SCREWS:

Types of screws required determined by material of profile used (sold separately). For additional information regarding screw selection - See Truth Tips.

TRUTH TIPS:

1. When two locks are used on one window, the placement of each lock, with respect to its keeper, becomes very critical to maintain a constant weatherseal on all sides of the window and to insure that each lock engages properly with its keeper.
2. For vinyl window applications, mounting screws should pass through two PVC walls, or one PVC wall and one insert wall.



INCLUDE TRUTH SPECS ON YOUR NEXT WINDOW PROJECT

Recess mounted check rail locks shall be included which will increase both security and weatherseal tightness.

Window check rail locks will be of internal cam design to provide optimal pull-in to aid in sealing the meeting rails. The lock and keeper shall be constructed of high pressure zinc alloy die castings.

Window locks shall be Recess Mounted Check Rail Locks, manufactured by Truth Hardware.

RECESS MOUNTED SASH LOCKS

FIG. 1 APPLICATION OF TRUTH RECESS MOUNTED CHECK RAIL LOCK S

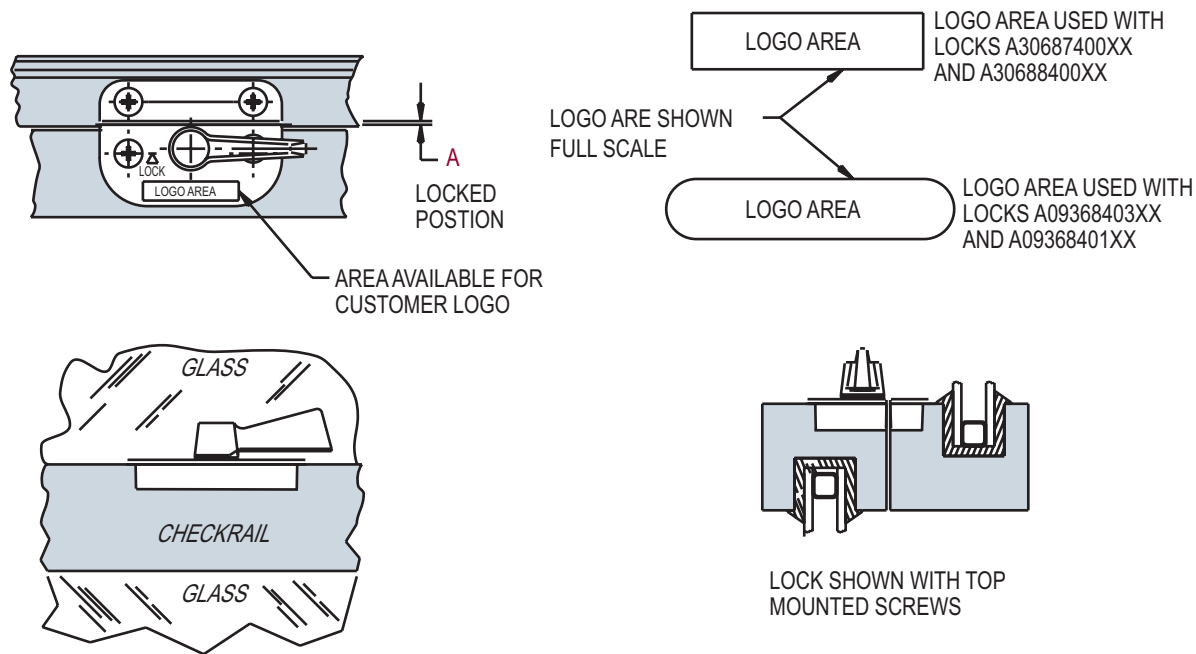
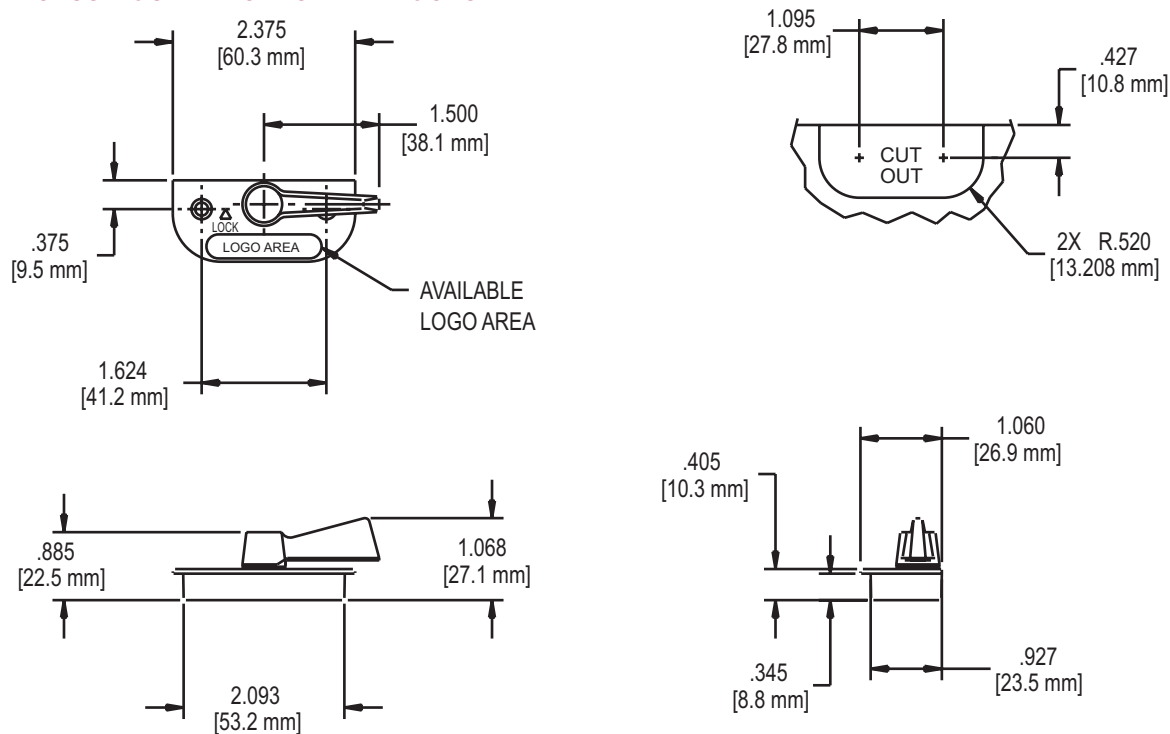


FIG. 2 RECESS MOUNTED CHECK RAIL LOCKS

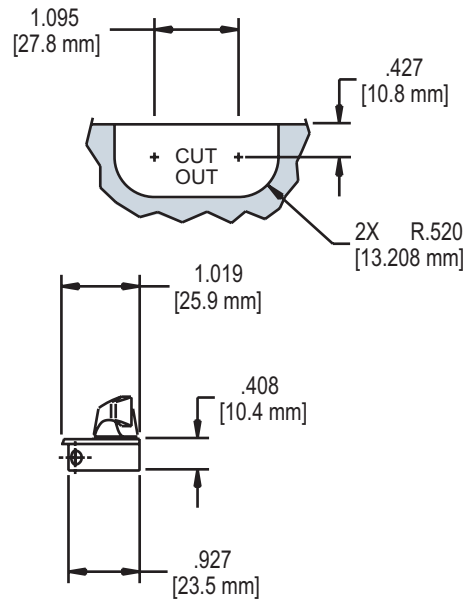
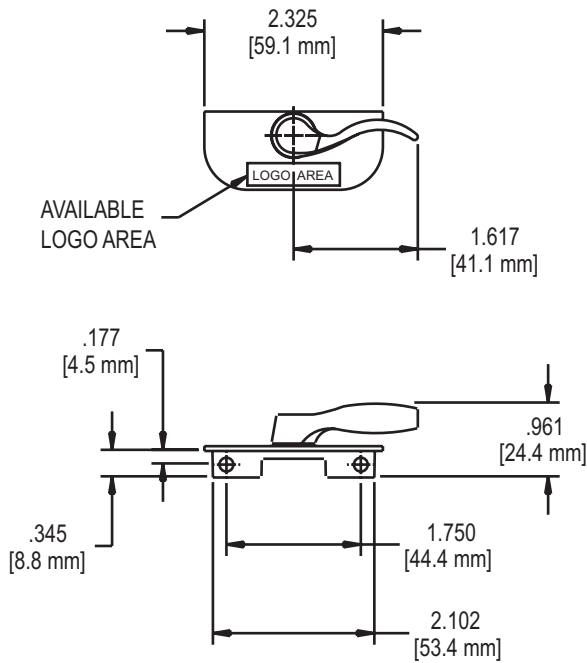


RECOMMENDED SCREWS:

(QTY 2) #6 PHILLIPS FLAT HEAD SCREWS. LENGTH & THREAD TYPE TO BE DETERMINED BY APPLICATION.

LOCK P/N	CAM PULL-IN	AVAILABLE KEEPERS	DIM. "A"
A09368403XX	.050	C09372XX	.032
		C30021XX	
A09368401XX	.090	C09372XX	.032
		C30021XX	

FIG. 3 A30687400XX RECESS MOUNTED CHECK RAIL LOCK

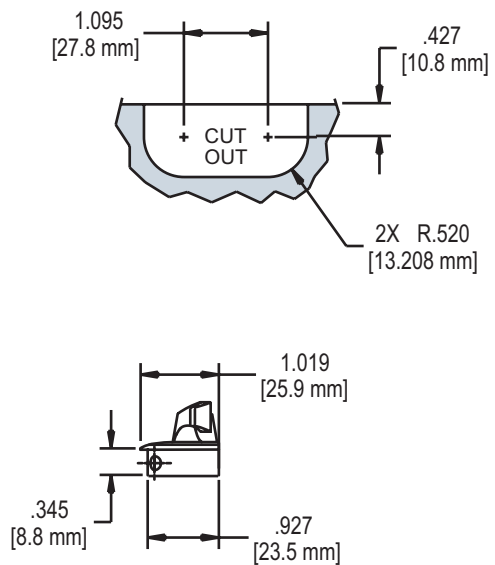
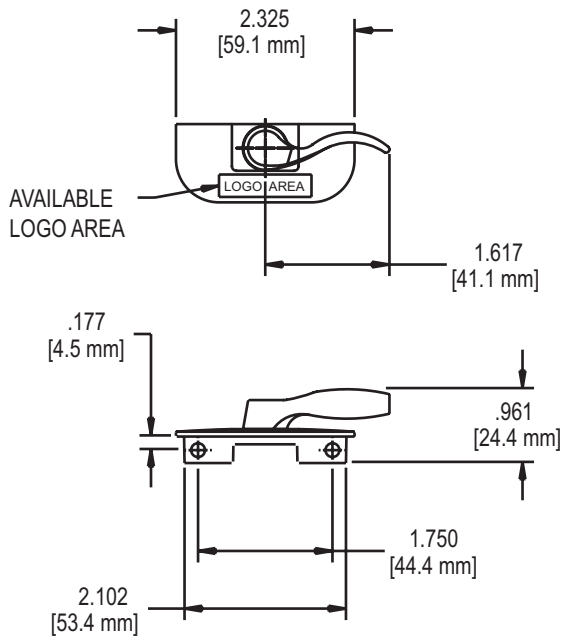


RECOMMENDED SCREWS:

(QTY 2)#7 PHILLIPS FLAT HEAD SCREWS.
LENGTH & THREAD TYPE TO BE DETERMINED
BY APPLICATION.

LOCK P/N	CAM PULL-IN	AVAILABLE KEEPERS	DIM. "A"
A30687400XX	.090	40496.XX	.035
		40911.XX	.030
		40821.XX	.035

FIG. 4 A30688400XX RECESS MOUNTED CHECK RAIL LOCK



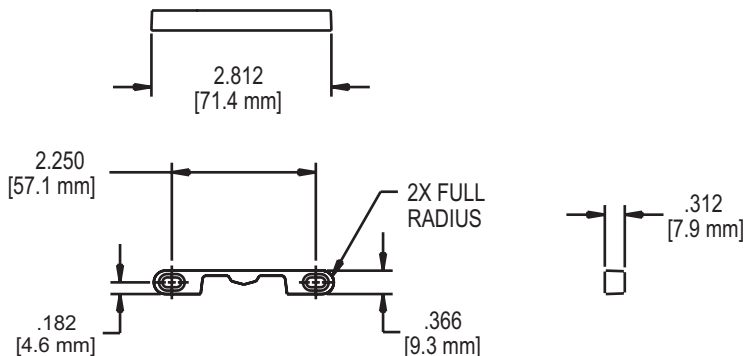
RECOMMENDED SCREWS:

(QTY 2)#7 PHILLIPS FLAT HEAD SCREWS.
LENGTH & THREAD TYPE TO BE
DETERMINED BY APPLICATION.

LOCK P/N	CAM PULL-IN	AVAILABLE KEEPERS	DIM. "A"
A30688400XX	.090	40496.XX	.035
		40911.XX	.030
		40821.XX	.035

RECESS MOUNTED SASH LOCKS

FIG. 5 40496XX RECESS MOUNT KEEPER

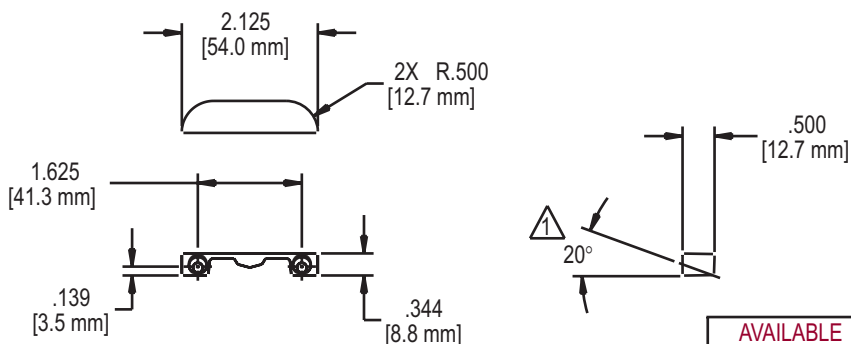


RECOMMENDED SCREWS:

(QTY 2) #6 PHILLIPS FLAT HEAD SCREW.
(LENGTH AND THREAD TYPE TO BE DETERMINED BY PROFILE.)

AVAILABLE LOCKS	DIM A
A30687400XX	.035
A30688400XX	.035

FIG. 6 40821XX RECESS MOUNT KEEPER



RECOMMENDED SCREWS:

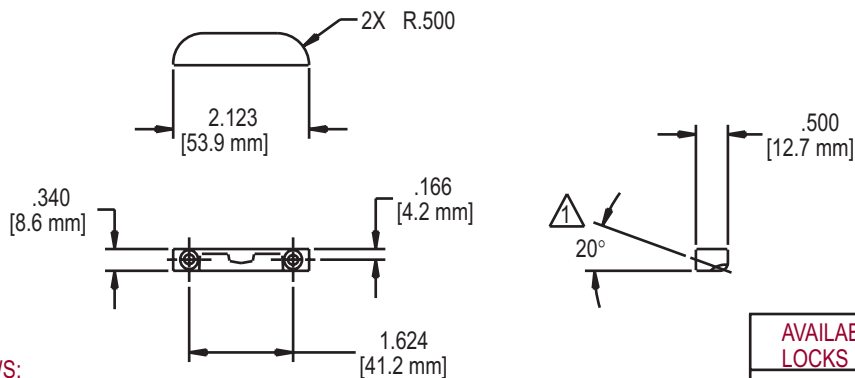
(QTY 2) #6 PHILLIPS FLAT HEAD SCREW.
(LENGTH AND THREAD TYPE TO BE DETERMINED BY PROFILE.)

NOTE:

ANGLE MOUNTING HOLE LOCATION

AVAILABLE LOCKS	DIM A
A30687400XX	.035
A30688400XX	.035

FIG. 7 C30021XX RECESS MOUNT KEEPER



RECOMMENDED SCREWS:

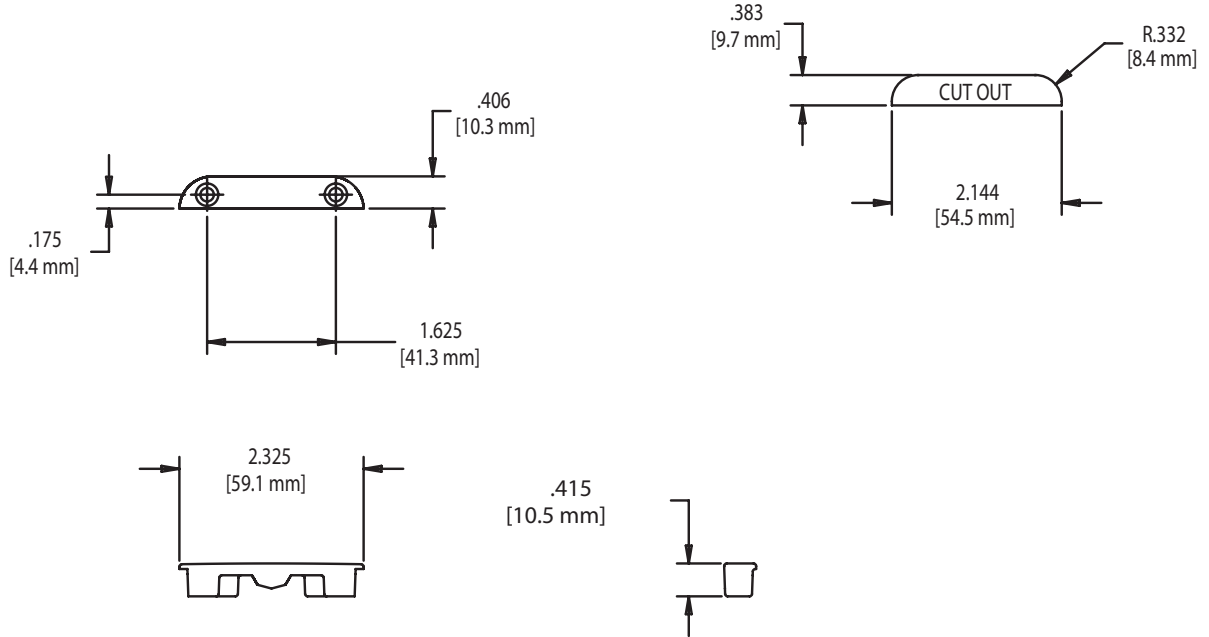
(QTY 2) #6 PHILLIPS FLAT HEAD SCREW.
(LENGTH AND THREAD TYPE TO BE DETERMINED BY PROFILE.)

NOTE:

ANGLE MOUNTING HOLE LOCATION

AVAILABLE LOCKS	DIM A
A09368401XX	.032
A09368403XX	.032

FIG. 8 40911XX RECESS MOUNT KEEPER

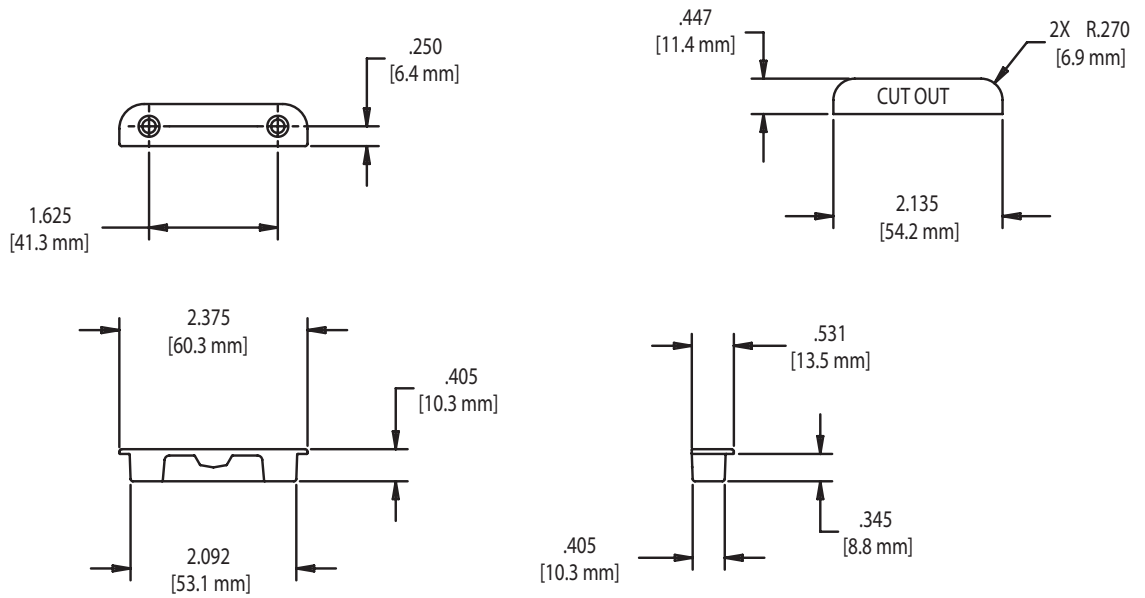


RECOMMENDED SCREWS:

(QTY 2) #6 PHILLIPS FLAT HEAD SCREW.
(LENGTH AND THREAD TYPE TO BE DETERMINED BY PROFILE.)

AVAILABLE LOCKS	DIM "A"
A30687400XX	.030
A30688400XX	.030

FIG. 9 CO9372XX RECESS MOUNT KEEPER



RECOMMENDED SCREWS:

(QTY 2) #6 PHILLIPS FLAT HEAD SCREW.
(LENGTH AND THREAD TYPE TO BE DETERMINED BY PROFILE.)

AVAILABLE LOCKS	DIM "A"
A09368401XX	.032
A09368403XX	.032

**RECESS MOUNTED
SASH LOCKS**